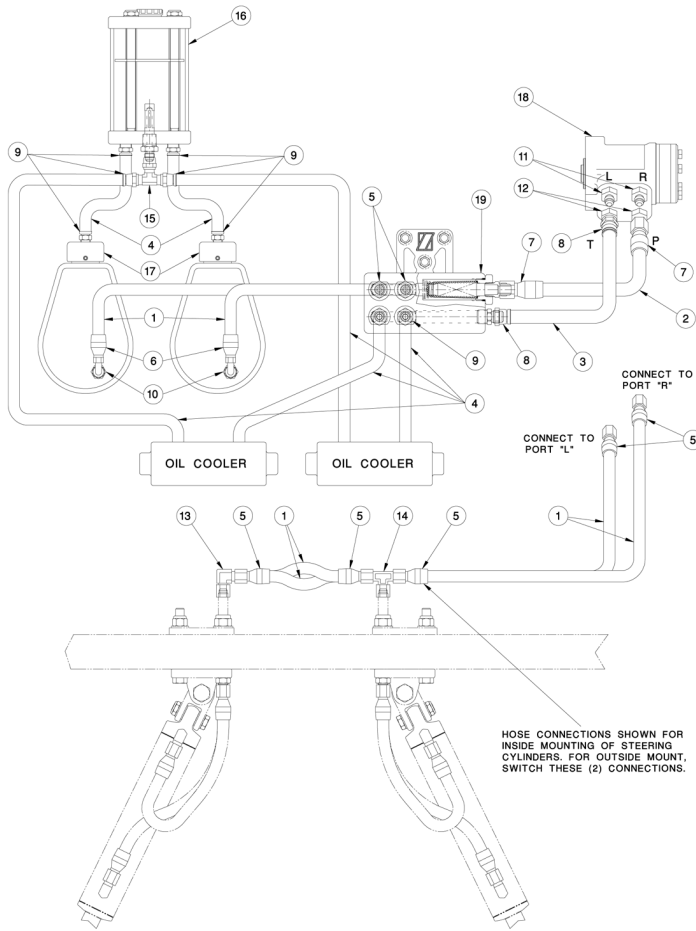


Steering Systems



High-horsepower/high-speed boating is here and steering systems must perform at maximum capacity. Zeiger Industries Hydraulic Steering Systems are designed to provide that extra margin of safety. Our system easily handles stern drive engines and in-board applications.

System selection and installation are simplified with just three major components: helm, cylinder and hose. We offer a comprehensive range of available cylinders to handle the variety of stern drive steering applications. Zeiger Industries is totally committed to safety, quality performance and simplicity.

Zeiger Industries highly recommend to the boat manufacturer, safety director or quality assurance manager of within, to review information provided by Zeiger Industries about our products, and to if not already develop SOP's Information provided by Zeiger Industries are considered guidelines and recommendations. Any questions concerning our products should be directed to our technical service department between the hours of 8:00 a. m. and 5:00 p.m. EST (419) 621-7770.

STEERING OVERVIEW

All information, illustrations and specifications contained in this catalog are based on the latest product information available at time of publication. Zeiger Industries reserves the right to make changes at any time without obligation. As required, revisions to this catalog will be made available.

MerCruiser recommends the use of an external power steering system when the power steering cylinders connect directly to the stern drive unit on the outside of the boat. This arrangement gives additional support for tighter, precise steering control and is recommended for the following applications:

Required for high speed and/or high horsepower single or twin-engine applications and/or boats with unusual handling characteristics. It is virtually impossible to give a specific recommendation as to when external power steering should be used, as this varies from boat design to boat design. Generally speaking, it is recommended to use external power steering on boats which run in excess of 70 mph. However, there are boats which run 60 mph that would benefit from the use of external power steering. Because of the many variables involved, the final decisions as to whether or not external power steering is required rests on with the boat manufacturer and must be made after a thorough test and evaluation of each specific boat. If there is any question whether or not external power steering is necessary, MrCruiser recommends that it be installed.

