

Ordering Information

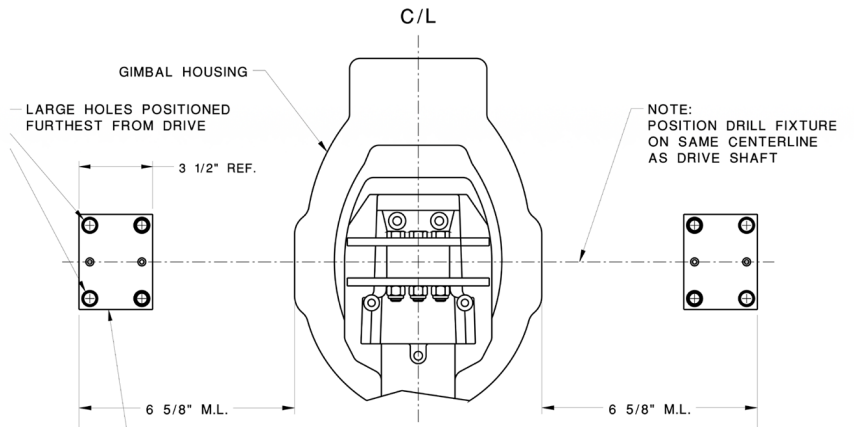
Steering systems are pre-engineered and are in kit form for ease of ordering.

6 5/8" MOUNTING LOCATION DRILL FIXTURE LAYOUT

**Drive Kits
Hose Kits
Helm Kits
Tie Bar Mounting Kits
Tie Bar Kits**

Tie bar center line measurements are required for twin, triple and quad installations.

**Ask About Our OEM
Custom Rigging Packages**



Transom Mounting Locations For Bravo Drive

The first steps in determining the proper systems.

1. Assessment of physical room available for the mounting location of transom brackets
2. Determine if inside or outside mounting is most practical. Boats with molded swim platforms may require inside mounting.
3. Be sure that transom brackets are mounted center line to drive shaft center line (see drawing.)
4. The distance between the outside of the gimbal to the outside of the transom bracket will determine the proper cylinder, rod length and turning radius. This measurement is pre-engineered.
5. Your centerline dimension between engines will be required for tie bar length.

**Transom Bracket
Mounting Location**

**ML 6 5/8"
ML 7 3/4"
ML 10 3/4" TRS**

**Installation instructions and
drawings are provided with
each assembly kit!**