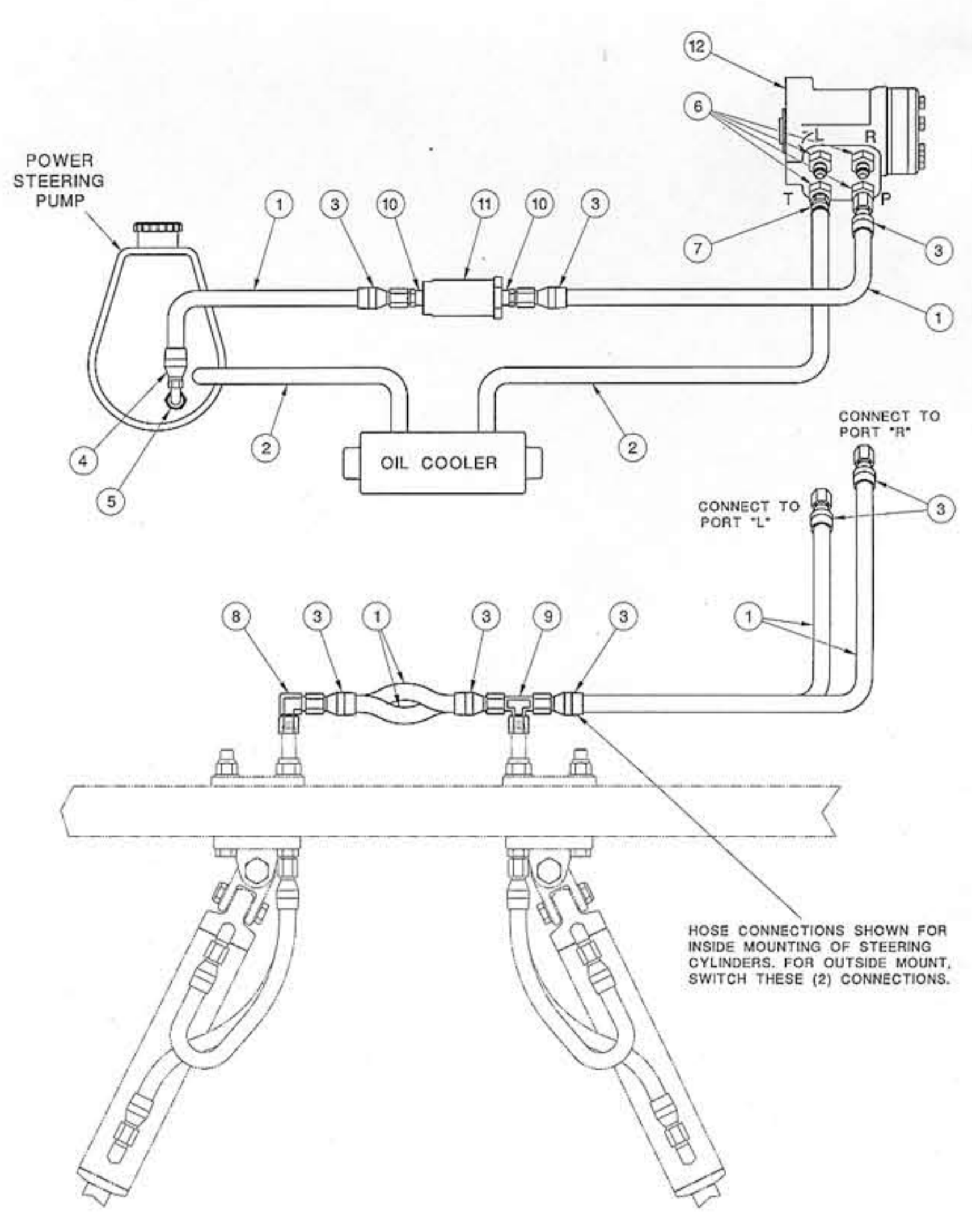


SINGLE DRIVE SINGLE RAM BRAVO HOSE KIT

No.	Qty.	Part#	Description
1	60	0002170	#6 HIGH PRESSURE HOSE (1 FOOT LENGTHS)
2	20	0002173	#6 LOW PRESSURE HOSE (1 FOOT LENGTHS)
3	7	0002109	#6 BRASS REUSABLE HOSE ENDS
4	1	0002566	#6 90 DEG. STEEL REUSABLE HOSE ENDS
5	1	0002175	HIGH PRESSURE ADAPTERS - POWER STEERING PUMP
6	4	0002172	STEEL ADAPTER WITH O-RING 8-6
7	1	0002171	#6 - #6 BRASS PUSHLOCK HOSE ENDS
8	2	0003191	#6 90 DEG. SWIVEL STEEL
9	2	0002365	3/8 MALE PIPE - #6 JIC ADAPTER
10	1	0002235	3/8 INLINE FILTER
11	1	0002572	97 CM - 5.9 CU IN STEERING VALVE

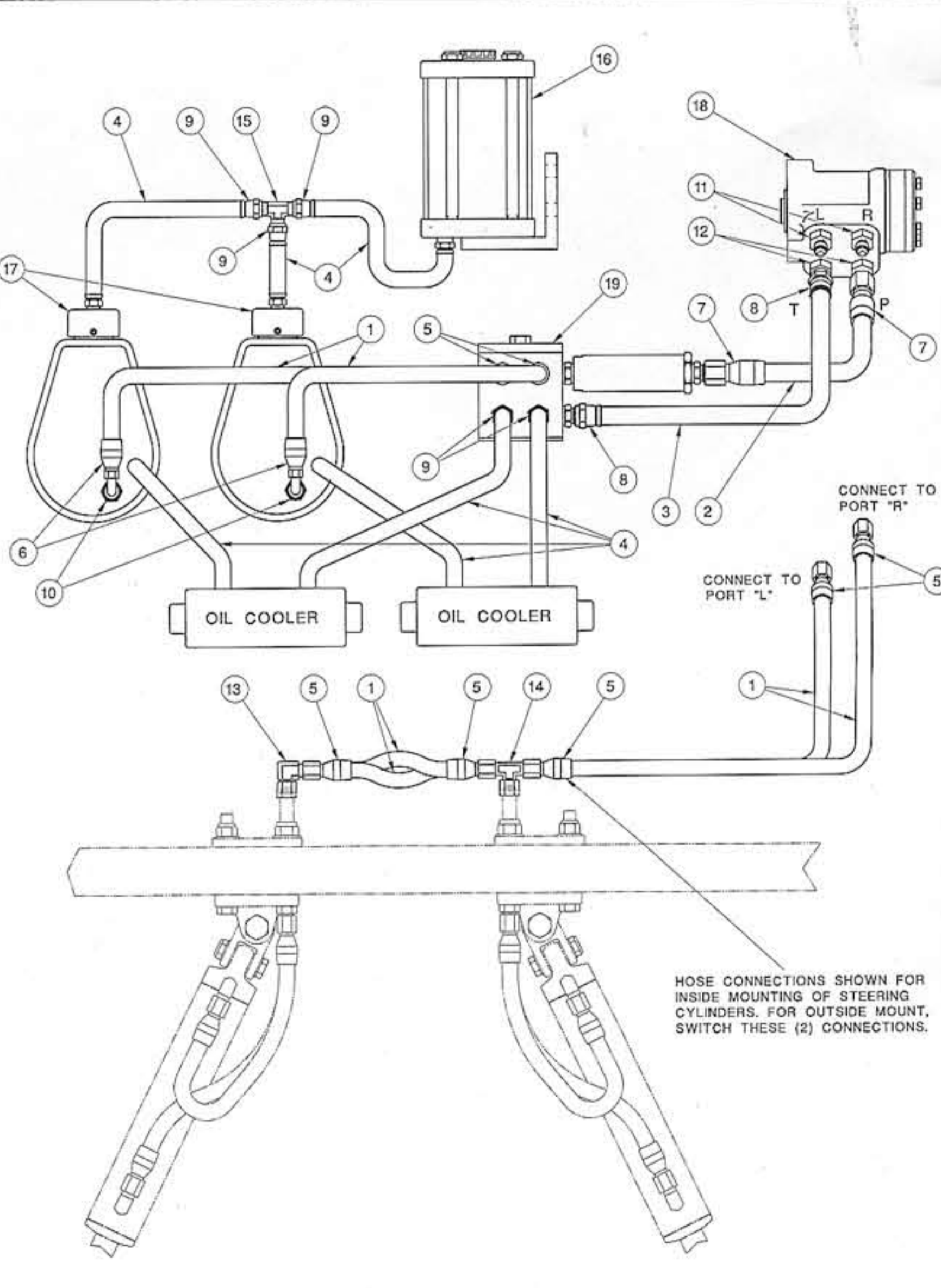


TWIN DRIVE SINGLE PUMP BRAVO HOSE KIT

No.	Qty.	Part#	Description
1	80	0002170	#6 HIGH PRESSURE HOSE (1 FOOT LENGTHS)
2	25	0002173	#6 LOW PRESSURE HOSE (1 FOOT LENGTHS)
3	11	0002109	#6 BRASS REUSABLE HOSE ENDS
4	1	0002566	#6 90 DEG. STEEL REUSABLE HOSE ENDS
5	1	0002175	HIGH PRESSURE ADAPTERS - POWER STEERING PUMP
6	4	0002172	STEEL ADAPTER WITH O-RING 8-6
7	1	0002171	#6 - #6 BRASS PUSHLOCK HOSE ENDS
8	2	0003191	#6 90 DEG. SWIVEL STEEL
9	2	0003190	#6 STEEL SWIVEL TEE
10	2	0002365	3/8 MALE PIPE - #6 JIC ADAPTER
11	1	0002235	3/8 INLINE FILTER
12	1	0002572	97 CM - 5.9 CU IN STEERING VALVE



HOSE CONNECTIONS SHOWN FOR INSIDE MOUNTING OF STEERING CYLINDERS. FOR OUTSIDE MOUNT, SWITCH THESE (2) CONNECTIONS.



TWIN DRIVE TWIN PUMP BRAVO HOSE KIT

No.	Qty.	Part#	Description
1	75	0002170	#6 HIGH PRESSURE HOSE (1 FOOT LENGTHS)
2	30	0003475	#8 HIGH PRESSURE HOSE (1 FOOT LENGTHS)
3	30	0003476	#8 LOW PRESSURE HOSE (1 FOOT LENGTHS)
4	15	0002173	#6 LOW PRESSURE HOSE (1 FOOT LENGTHS)
5	10	0002169	#6 BRASS REUSABLE HOSE ENDS
6	2	0002566	#6 90 DEG. STEEL REUSABLE HOSE ENDS
7	2	0003477	#8 BRASS REUSABLE HOSE ENDS
8	2	0003478	#8 - #8 BRASS PUSHLOCK HOSE ENDS
9	5	0002171	#6 - #6 BRASS PUSHLOCK HOSE ENDS
10	2	0002175	HIGH PRESSURE ADAPTERS - POWER STEERING PUMP
11	2	0002172	STEEL ADAPTER WITH O-RING 8-6
12	2	0003479	STEEL ADAPTER WITH O-RING 8-8
13	2	0003191	#6 90 DEG. SWIVEL STEEL
14	2	0003190	#6 STEEL SWIVEL TEE
15	1	0001936	3/16-18 x 3/16-18 STEEL UNION TEE
16	1	1002083	RESERVOIR KIT WITH HOSE
17	2	1002105	POWER STEERING PUMP CAPS WITH FITTINGS
18	1	0002572	97 CM - 5.9 CU IN STEERING VALVE
19	1	1002076	HOSE MANIFOLD ASSEMBLY



HOSE CONNECTIONS SHOWN FOR INSIDE MOUNTING OF STEERING CYLINDERS. FOR OUTSIDE MOUNT, SWITCH THESE (2) CONNECTIONS.